

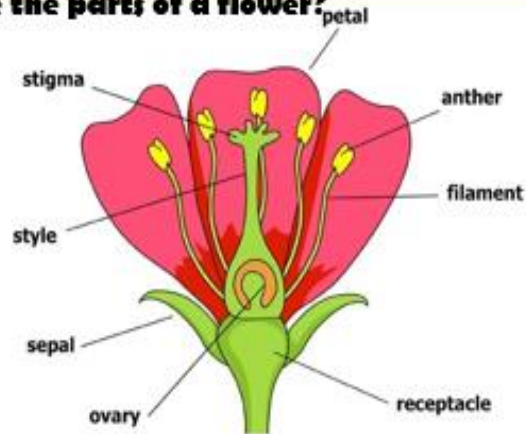
Knowledge organiser for plants

Key Vocabulary

Roots	The anchor the plant into the ground and absorb water and nutrients from the soil.	Stem	This holds the plant up and carries water and nutrients from the soil to the leaves. A trunk is the stem of a tree.
Flowers	These make seeds to grow into new plants. Their petals attract pollinators to the plant.	Evaporation	When liquid turns into a gas.
Leaves	These make food for the plant using sunlight and carbon dioxide from the air (photosynthesis).	Petal	The brightly coloured part of the flower that attracts insects to pollinate the plant.
Sepal	Leaf-like structures that protect the flower and petals before they open out.	Germination	When a seed starts to grow.
Pollinator	Animals or insects which carry pollen between plants e.g. birds, bees, bats.	Pollination	When pollen (a fine powdery substance produced by a flowering plant) is moved from the male anther to the female stigma.
Nutrients	These substances are needed by living things to grow and survive. Plants get nutrients from the soil and also make their own food in their leaves.	Seed dispersal	A method of moving the seeds away from the parent plant so that the seeds have the best chance of survival.
Fertilisation	When the male and female parts of the flower have mixed in order to make seeds for new plants to grow.		

Key Knowledge

What are the parts of a flower?



What are the male and female parts of a plant?

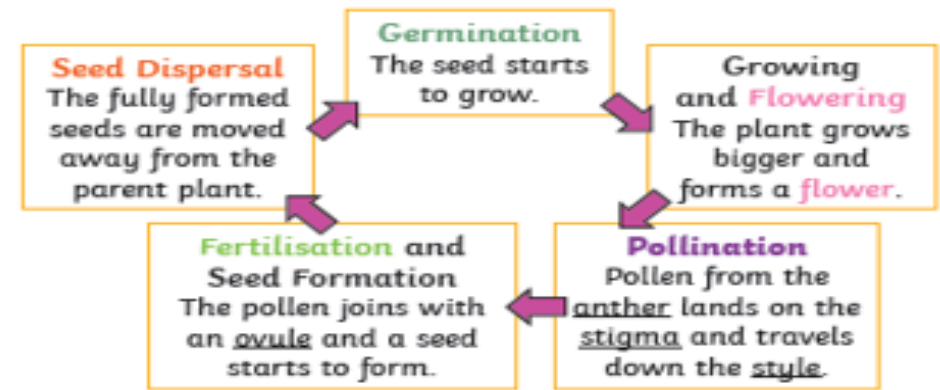
Stamen

The male parts of the flower. The stamen is made up of the anther and the filament. The filament's job is to hold up the anther. The job of the anther is to make pollen.

Carpel (Pistil)

The female parts of the flower. Made up of the stigma, style and ovary. The job of the stigma collects pollen when a pollinator brushes by it. The ovary contains the ovules, which are part of the flower that gets fertilised and eventually becomes a new seed.

What is the life cycle of a flowering plant?



Seed Dispersal

Seeds can be dispersed by:



dropping



carrying



water



shaking



eating



bursting

Pollination is the transfer of pollen from the stamens of one flower to the stigma of another flower of the same type.